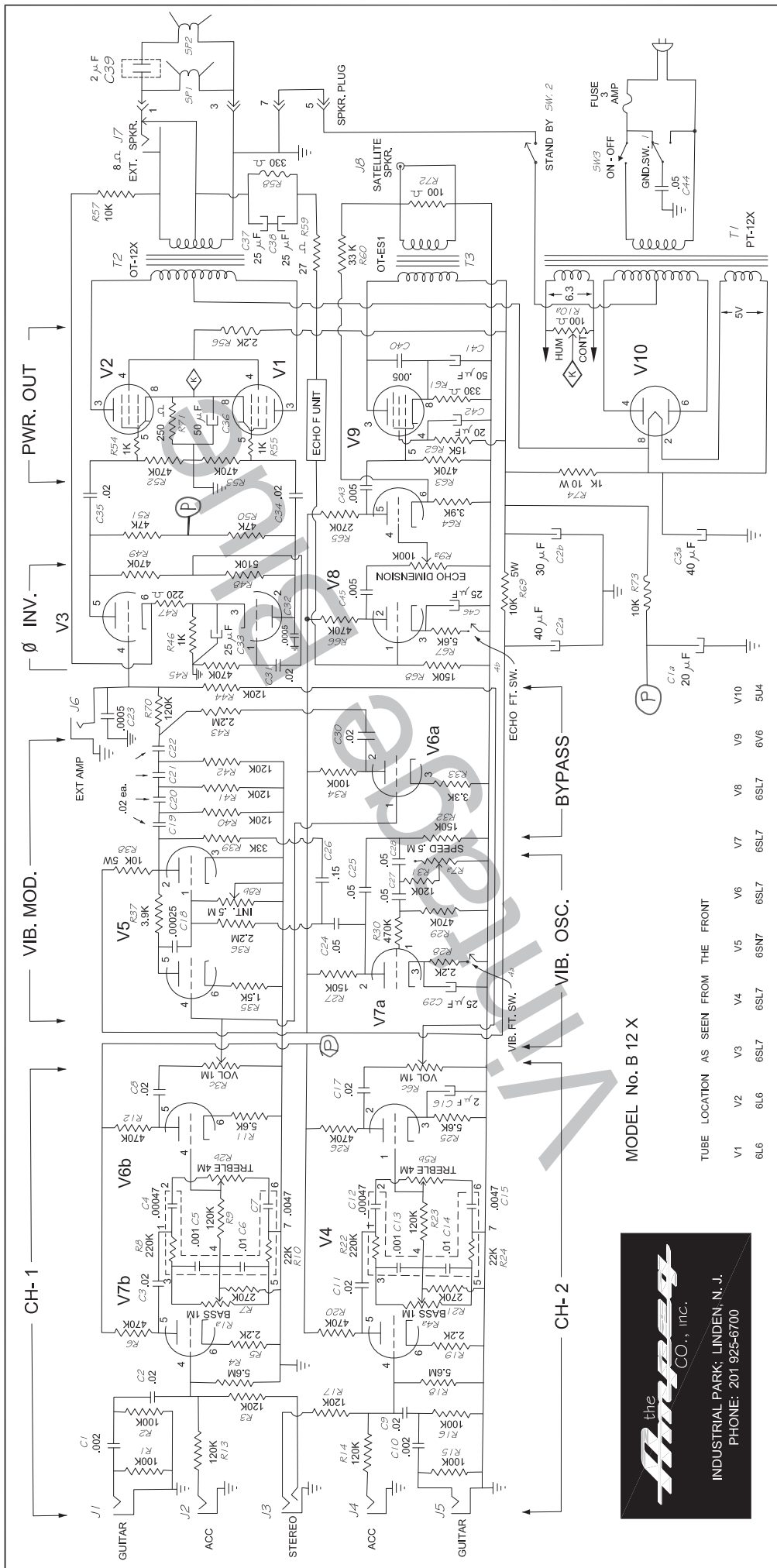


Vintage Blue

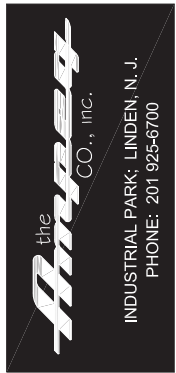
TRADE NAME	PORTAFLEX	Model B-12-X
MANUFACTURER	The Ampeg Co.	Industrial Park Linden, New Jersey
TYPE SET	Audio amplifier (two channels)	
TUBES (ten)	1-5U4, 2-6L6, 5-6SL7, 1-6SN7, 1-6V6	
POWER SUPPLY	240v A.C. 50/60 cycles	EXPORT
POWER SUPPLY	117v A.C. 50/60 cycles	USA
POWER OUTPUT	30 Watts	



MODEL No. B 12 X

TUBE LOCATION AS SEEN FROM THE FRONT

- V1 V2 V3 V4 V5 V6 V7 V8 V9 V10
- 6L6 6L6 6SL7 6SL7 6SL7 6SN7 6SL7 6SL7 6SL7 6V6 5U4



TRANSFORMER (AUDIO OUTPUT)

Item No.	Impedance		D.C. Rec.		Part No.
	Pri.	Sec.	Pri.	Sec.	
T 2	6.5k	8 ohms 16 ohms	230 ohms	.8 ohms 1.2 ohms	OT-12-X

TRANSFORMER (ECHO OUTPUT)

Item No.	Impedance		D.C. Rec.		Part No.
	Pri.	Sec.	Pri.	Sec.	
T 3	5k	8 ohms	150 ohms	.3 ohms	OT-ES-1

TRANSFORMER (POWER) USA

Item No.	RATING				Part No.
	Pri.	Sec. 1	Sec. 2	Sec. 3	
T 1	117v AC 50/60 cyc.	800v AC Ct. 200ma	5v AC 3A AC	6.3v AC Ct. 5A AC	PT-12-X

TRANSFORMER (POWER) EXPORT

Item No.	RATING				Part No.
	Pri.	Sec. 1	Sec. 2	Sec. 3	

VOLTAGE READING (no signal inserted)

Item	Tube	Pin 1	Pin 2	Pin 3	Pin 4	Pin 5	Pin 6	Pin 7	Pin 8
V1	6L6		F.	410v	335v			F.	25v
V2	6L6		F.	410v	335v			F.	25v
** V3	6SL7		230v	2.2v		240v	2.5v	F.	F.
V4	6SL7		130v	1.8v		84v	.9v	F.	F.
^ V5	6SN7		90v	0		82v	2.7v	F.	F.
V6	6SL7		150v	1.9v		135v	1.8v	F.	F.
^ V7	6SL7		120v	1.1v		86v	.9v	F.	F.
^ ** V8	6SL7			1.3v		90v	1.3v	F.	F.
V9	6V6		F.	325v	280v			F.	15v
V10	5U4		410v						410v

** Voltage reading depends on the value of the R50,51.

^ Voltage reading with Intensity control at "minimum"

Voltage reading with Intensity control at "maximum" (vibrato "On"):

Pin 2 = 100v Pin 5 = 90v Pin 6 = 3.1v

^ Voltage reading with oscillator operative

Voltage reading with oscillator inoperative: Pin 2 = 200v Pin 3 = 4.2v

^ ** Voltage reading with echo operative

Voltage reading with echo inoperative: Pin 3 = 4.2v Pin 5 = 200v

Nominal tolerance on component values makes possible a variation of $\pm 5\%$ in voltage readings.

TUBES

Item No.	Tube	Use
V 1	6L6 GC	Power output
V 2	6L6 GC	Power output
V 3	6SL7	Phase Inverter
V 4	6SL7	Voltage amplifier (channel two)
V 5	6SN7	Vibrato modulator
V 6	6SL7	Voltage amplifier (channel one)
V 7	6SL7	a) Vibrato oscillator b) Voltage amp. (ch. one)
V 8	6SL7	Voltage amplifier (echo)
V 9	6V6	Power output (echo)
V 10	5U4	Rectifier

RESISTANCE READING

Item	Tube	Pin 1	Pin 2	Pin 3	Pin 4	Pin 5	Pin 6	Pin 7	Pin 8
V 1	6L6		F.	Inf.	Inf.	471k		F.	250
V 2	6L6		F.	Inf.	Inf.	471k		F.	250
V 3	6SL7	470k	Inf.	1k	++	Inf.	1.2k	F.	F.
V 4	6SL7	§	Inf.	2.2k	5.6mg	Inf.	5.6k	F.	F.
V 5	6SN7	§§§	Inf.	0	+++	Inf.	1.5k	F.	F.
V 6	6SL7	+	Inf.	3.3k	°+	Inf.	5.6k	F.	F.
V 7	6SL7	940k	Inf.	^ 2.2k	5.6mg	Inf.	2.2k	F.	F.
V 8	6SL7	150k	Inf.	^ 5.6k			3.9k	F.	F.
V 9	6V6		F.	Inf.	Inf.	470k		F.	330
V 10	5U4		Inf.		30	Inf.	30		

§ - depends on the position of Bass control (channel two)

§§§ - depends on the position of Intensity control

+ depends on the position of Volume control (channel one)

^ Vibrato foot switch closed

^ Echo foot switch closed

++ depends on the position of Volume control (channel two)

°+ depends on the position of Bass control (channel one)

Resistance Reading $\pm 10\%$

CONTROLS

Item No.	Rating		Type	Use
	Ohms	Watt		
R 1a	1mg	1/2	Lin.	Bass (channel one)
R 2b	4mg	1/2	Lin.	Treble "
R 3c	1mg	1/2	Log.	Volume "
R 4a	1mg	1/2	Lin.	Bass (channel two)
R 5b	4mg	1/2	Lin.	Treble "
R 6c	1mg	1/2	Log.	Volume "
R 7a	500k	1/2	Lin.	Speed (Vibrato oscillator)
R 8b	500k	1/2	Lin.	Intensity
R 9a	100k	1/2	Log.	Dimension
R 10a	100	1/2		Hum pot.

RESISTORS

Item No.	Rating		Item No.	Rating	
	Ohms	Watts		Ohms	Watts
R 1,2	100k	1/2	R 42	120k	1/2
R 3,9	120k	1/2	R 43	2.2mg	1/2
R 4	5.6mg	1/2	R 44	120k	1/2
R 5	2.2k	1/2	R 45	470k	1/2
R 6	470k	1/2	R 46	1k	1/2
R 7	270k	1/2	R 47	220	1/2
^R 8	220k	1/2	R 48	510k	1/2
^R 10	22k	1/2	R 49	470k	1/2
R 11	5.6k	1/2	^R 50,51	47k	1/2
R 12	470k	1/2	R 52,53	470k	1/2
R 13,14	120k	1/2	R 54,55	1k	1/2
R 15,16	100k	1/2	R 56	2.2k	5
R 17	120k	1/2	R 57	10k	1/2
R 18	5.6mg	1/2	R 58	330	2
R 19	2.2k	1/2	R 59	27	5
R 20	470k	1/2	R 60	33k	1/2
R 21	270k	1/2	R 61	330	2
^R 22	220k	1/2	R 62	15k	1
R 23	120k	1/2	R 63	470k	1/2
^R 24	22k	1/2	R 64	3.9k	1/2
R 25	5.6k	1/2	R 65	270k	1/2
R 26	470k	1/2	R 66	470k	1/2
R 27	150k	1/2	R 67	5.6k	1/2
R 28	2.2k	1/2	R 68	150k	1/2
R 29,30	470k	1/2	R 69	10k	5
R 31	120k	1/2	R 70	120k	1/2
R 32	150k	1/2	R 71	250	10
R 33	3.3k	1/2	R 72	100	1
R 34	100k	1/2	R 73	10k	5
R 35	1.5k	1/2	R 74	1k	10
R 36	2.2mg	1/2			
R 37	3.9k	1/2			
R 38	10k	5			
R 39	33k	1/2			
R 40	120k	1/2			
R 41	120k	1/2			

^R 50,51 can also be 120k
^R 8,10,22,24 see "Printed ckt"

All resistors $\pm 10\%$
R 29 can also be different

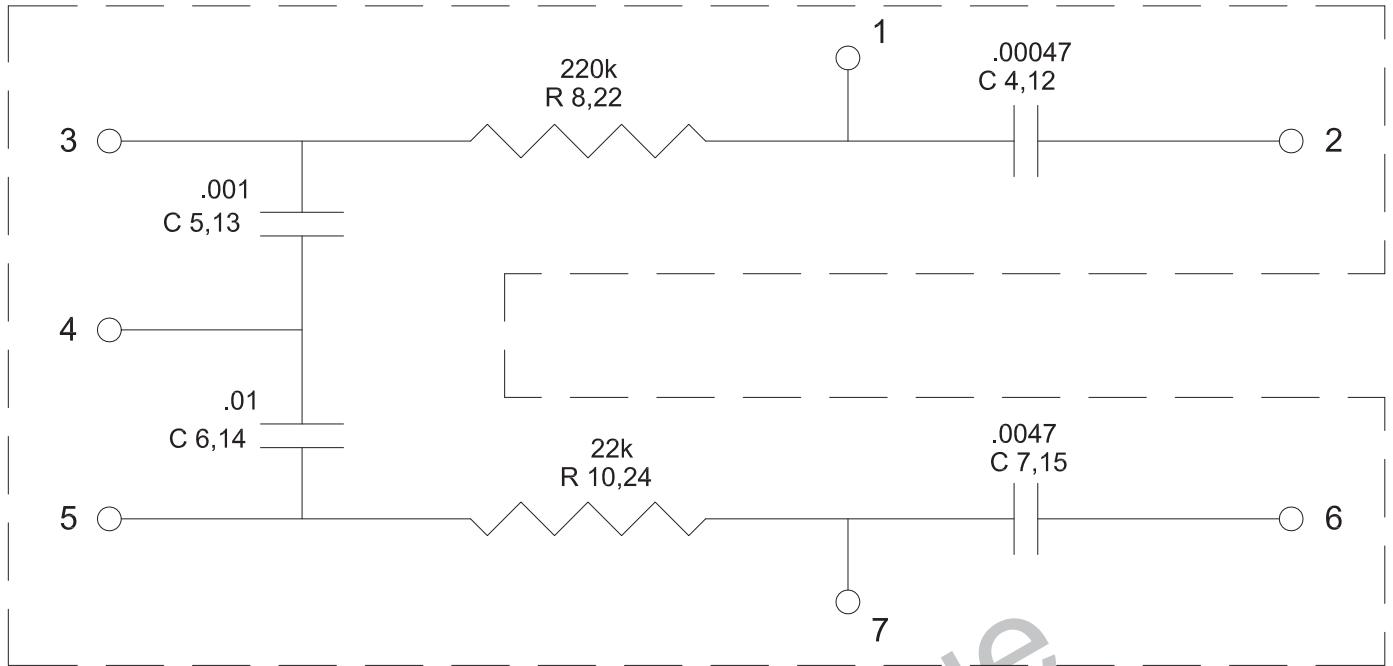
CAPACITORS

Item No.	Rating		Type
	Cap.	Volt	
C 1a	20	450	electrolytic
C 2a, b	40, 30	500	"
C 3a	40	500	"
C 1	.002	200	ceramic
C 2	.02	200	"
C 3	.02	400	paper
C 4,12	.00047		see PC
C 5,13	.001		see PC
C 6,14	.01		see PC
C 7,15	.0047		see PC
C 8	.02	400	paper
C 9	.02	200	ceramic
C 10	.002	200	"
C 11,20	.02	400	paper
[^] C 16	2	6	electrolytic
C 17	.02	400	paper
C 18	.00025	200	ceramic
C 19,21,22	.02	400	paper
C 23	.0005	200	ceramic
C 24,25	.05	400	paper
C 26	.15	400	"
C 27,28	.05	400	"
C 29	25	12	electrolytic
C 30,31	.02	400	paper
C 32	.0005	400	ceramic
C 33	25	12	electrolytic
C 34,35	.02	400	paper
C 36	50	50	electrolytic
C 37,38,46	25	25	"
C 39	2		paper
C 40,43,45	.005	400	"
C 41	50	25	electrolytic
C 42	20	450	"
C 44	.05	600	paper

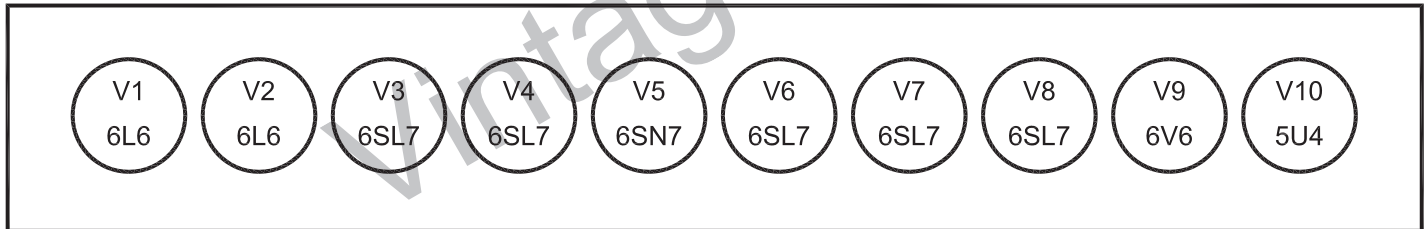
Capacity values given in rating column are in mfd

[^]C 16 value can be different

PRINTED CKT.



TUBE LOCATION



REVERBERATION UNIT

Item	Impedance		D.C. Res.	
	Input	Output	Input	Output
4 F	8 ohms	2250 ohms	1.4 ohms	180 ohms

SPEAKERS

Item	Rating			Part No.	Notes
	Size	Field	V.C. Imp.		
SP-1	12"	P.M.	8 ohms	C-12-N	
SP-2	2"x6"	P.M.	16 ohms	RP-103B	Tweeter
SP-3	4"	P.M	4 ohms	4CD3	Satellite
SP-4					spkrs

MISCELLANEOUS

Item No.	Notes
J 1	Input jack (open ckt) channel one
J 2	Input jack " "
J 3	Input jack " (double-stereo)
J 4	Input jack " (channel two)
J 5	Input jack " "
J 6	Input jack " ext. amplifier
J 7	Output jack (close ckt) ext. speaker
J 8	Phono jack (satellite speaker)
Sw.1	Ground switch spdt
Sw.2	Standby switch spst
Sw.3	On-off switch spst
Ft.Sw.4a,b	Foot switch for vibrato & echo spst (push-button)
Fuse	3 A 250v