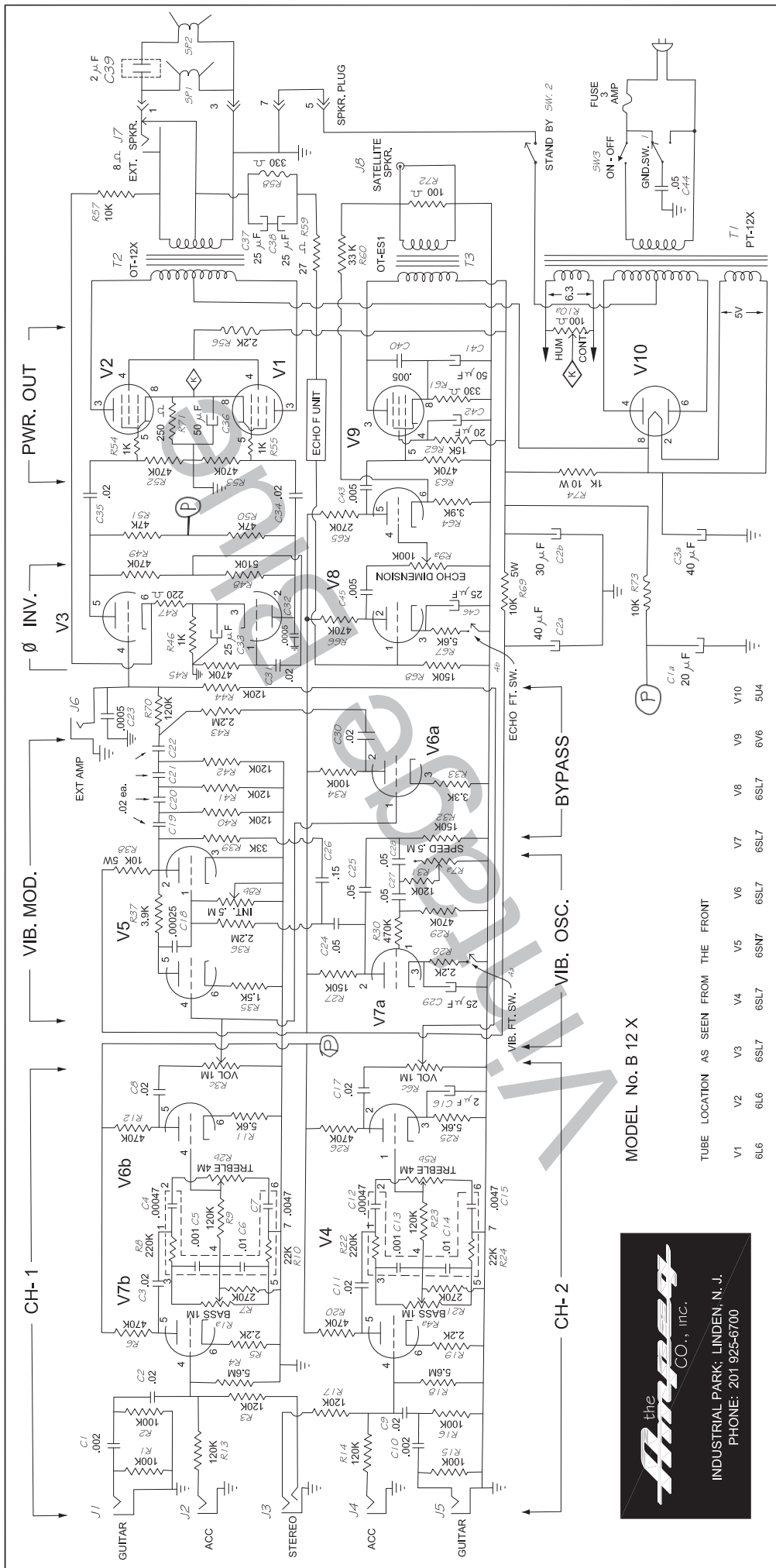


Vintage Blue

TRADE NAME	PORTAFLEX	Model B-12-X
MANUFACTURER	The Ampeg Co.	Industrial Park Linden, New Jersey
TYPE SET	Audio amplifier (two channels)	
TUBES (ten)	1-5U4, 2-6L6, 5-6SL7, 1-6SN7, 1-6V6	
POWER SUPPLY	240v A.C. 50/60 cycles	EXPORT
POWER SUPPLY	117v A.C. 50/60 cycles	USA
POWER OUTPUT	30 Watts	



MODEL No. B 12 X

TUBE LOCATION AS SEEN FROM THE FRONT

V1	V2	V3	V4	V5	V6	V7	V8	V9	V10
6L6	6L6	6SL7	6SL7	6SN7	6SL7	6SL7	6SL7	6V6	5U4



TRANSFORMER (AUDIO OUTPUT)

Item No.	Impedance		D.C. Rec.		Part No.
	Pri.	Sec.	Pri.	Sec.	
T 2	6.5k	8 ohms 16 ohms	230 ohms	.8 ohms 1.2 ohms	OT-12-X

TRANSFORMER (ECHO OUTPUT)

Item No.	Impedance		D.C. Rec.		Part No.
	Pri.	Sec.	Pri.	Sec.	
T 3	5k	8 ohms	150 ohms	.3 ohms	OT-ES-1

TRANSFORMER (POWER) USA

Item No.	RATING				Part No.
	Pri.	Sec. 1	Sec. 2	Sec. 3	
T 1	117v AC 50/60 cyc.	800v AC Ct. 200ma	5v AC 3A AC	6.3v AC Ct. 5A AC	PT-12-X

TRANSFORMER (POWER) EXPORT

Item No.	RATING				Part No.
	Pri.	Sec. 1	Sec. 2	Sec. 3	

VOLTAGE READING (no signal inserted)

Item	Tube	Pin 1	Pin 2	Pin 3	Pin 4	Pin 5	Pin 6	Pin 7	Pin 8
V1	6L6		F.	410v	335v			F.	25v
V2	6L6		F.	410v	335v			F.	25v
** V3	6SL7		230v	2.2v		240v	2.5v	F.	F.
V4	6SL7		130v	1.8v		84v	.9v	F.	F.
^ V5	6SN7		90v	0		82v	2.7v	F.	F.
V6	6SL7		150v	1.9v		135v	1.8v	F.	F.
^ V7	6SL7		120v	1.1v		86v	.9v	F.	F.
^ ** V8	6SL7			1.3v		90v	1.3v	F.	F.
V9	6V6		F.	325v	280v			F.	15v
V10	5U4		410v						410v

** Voltage reading depends on the value of the R50,51.

^ Voltage reading with Intensity control at "minimum"

Voltage reading with Intensity control at "maximum" (vibrato "On"):

Pin 2 = 100v Pin 5 = 90v Pin 6 = 3.1v

^ Voltage reading with oscillator operative

Voltage reading with oscillator inoperative: Pin 2 = 200v Pin 3 = 4.2v

^ ** Voltage reading with echo operative

Voltage reading with echo inoperative: Pin 3 = 4.2v Pin 5 = 200v

Nominal tolerance on component values makes possible a variation of $\pm 5\%$ in voltage readings.

TUBES

Item No.	Tube	Use
V 1	6L6 GC	Power output
V 2	6L6 GC	Power output
V 3	6SL7	Phase Inverter
V 4	6SL7	Voltage amplifier (channel two)
V 5	6SN7	Vibrato modulator
V 6	6SL7	Voltage amplifier (channel one)
V 7	6SL7	a) Vibrato oscillator b) Voltage amp. (ch. one)
V 8	6SL7	Voltage amplifier (echo)
V 9	6V6	Power output (echo)
V 10	5U4	Rectifier

RESISTANCE READING

Item	Tube	Pin 1	Pin 2	Pin 3	Pin 4	Pin 5	Pin 6	Pin 7	Pin 8
V 1	6L6		F.	Inf.	Inf.	471k		F.	250
V 2	6L6		F.	Inf.	Inf.	471k		F.	250
V 3	6SL7	470k	Inf.	1k	++	Inf.	1.2k	F.	F.
V 4	6SL7	§	Inf.	2.2k	5.6mg	Inf.	5.6k	F.	F.
V 5	6SN7	§§§	Inf.	0	+++	Inf.	1.5k	F.	F.
V 6	6SL7	+	Inf.	3.3k	°+	Inf.	5.6k	F.	F.
V 7	6SL7	940k	Inf.	^ 2.2k	5.6mg	Inf.	2.2k	F.	F.
V 8	6SL7	150k	Inf.	^ 5.6k			3.9k	F.	F.
V 9	6V6		F.	Inf.	Inf.	470k		F.	330
V 10	5U4		Inf.		30	Inf.	30		

§ - depends on the position of Bass control (channel two)

§§§ - depends on the position of Intensity control

+ depends on the position of Volume control (channel one)

^ Vibrato foot switch closed

^ Echo foot switch closed

++ depends on the position of Volume control (channel two)

°+ depends on the position of Bass control (channel one)

Resistance Reading $\pm 10\%$

CONTROLS

Item No.	Rating		Type	Use
	Ohms	Watt		
R 1a	1mg	1/2	Lin.	Bass (channel one)
R 2b	4mg	1/2	Lin.	Treble "
R 3c	1mg	1/2	Log.	Volume "
R 4a	1mg	1/2	Lin.	Bass (channel two)
R 5b	4mg	1/2	Lin.	Treble "
R 6c	1mg	1/2	Log.	Volume "
R 7a	500k	1/2	Lin.	Speed (Vibrato oscillator)
R 8b	500k	1/2	Lin.	Intensity
R 9a	100k	1/2	Log.	Dimension
R 10a	100	1/2		Hum pot.

RESISTORS

Item No.	Rating		Item No.	Rating	
	Ohms	Watts		Ohms	Watts
R 1,2	100k	1/2	R 42	120k	1/2
R 3,9	120k	1/2	R 43	2.2mg	1/2
R 4	5.6mg	1/2	R 44	120k	1/2
R 5	2.2k	1/2	R 45	470k	1/2
R 6	470k	1/2	R 46	1k	1/2
R 7	270k	1/2	R 47	220	1/2
^R 8	220k	1/2	R 48	510k	1/2
^R 10	22k	1/2	R 49	470k	1/2
R 11	5.6k	1/2	^R 50,51	47k	1/2
R 12	470k	1/2	R 52,53	470k	1/2
R 13,14	120k	1/2	R 54,55	1k	1/2
R 15,16	100k	1/2	R 56	2.2k	5
R 17	120k	1/2	R 57	10k	1/2
R 18	5.6mg	1/2	R 58	330	2
R 19	2.2k	1/2	R 59	27	5
R 20	470k	1/2	R 60	33k	1/2
R 21	270k	1/2	R 61	330	2
^R 22	220k	1/2	R 62	15k	1
R 23	120k	1/2	R 63	470k	1/2
^R 24	22k	1/2	R 64	3.9k	1/2
R 25	5.6k	1/2	R 65	270k	1/2
R 26	470k	1/2	R 66	470k	1/2
R 27	150k	1/2	R 67	5.6k	1/2
R 28	2.2k	1/2	R 68	150k	1/2
R 29,30	470k	1/2	R 69	10k	5
R 31	120k	1/2	R 70	120k	1/2
R 32	150k	1/2	R 71	250	10
R 33	3.3k	1/2	R 72	100	1
R 34	100k	1/2	R 73	10k	5
R 35	1.5k	1/2	R 74	1k	10
R 36	2.2mg	1/2			
R 37	3.9k	1/2			
R 38	10k	5			
R 39	33k	1/2			
R 40	120k	1/2			
R 41	120k	1/2			

^R 50,51 can also be 120k
^R 8,10,22,24 see "Printed ckt"

All resistors $\pm 10\%$
R 29 can also be different

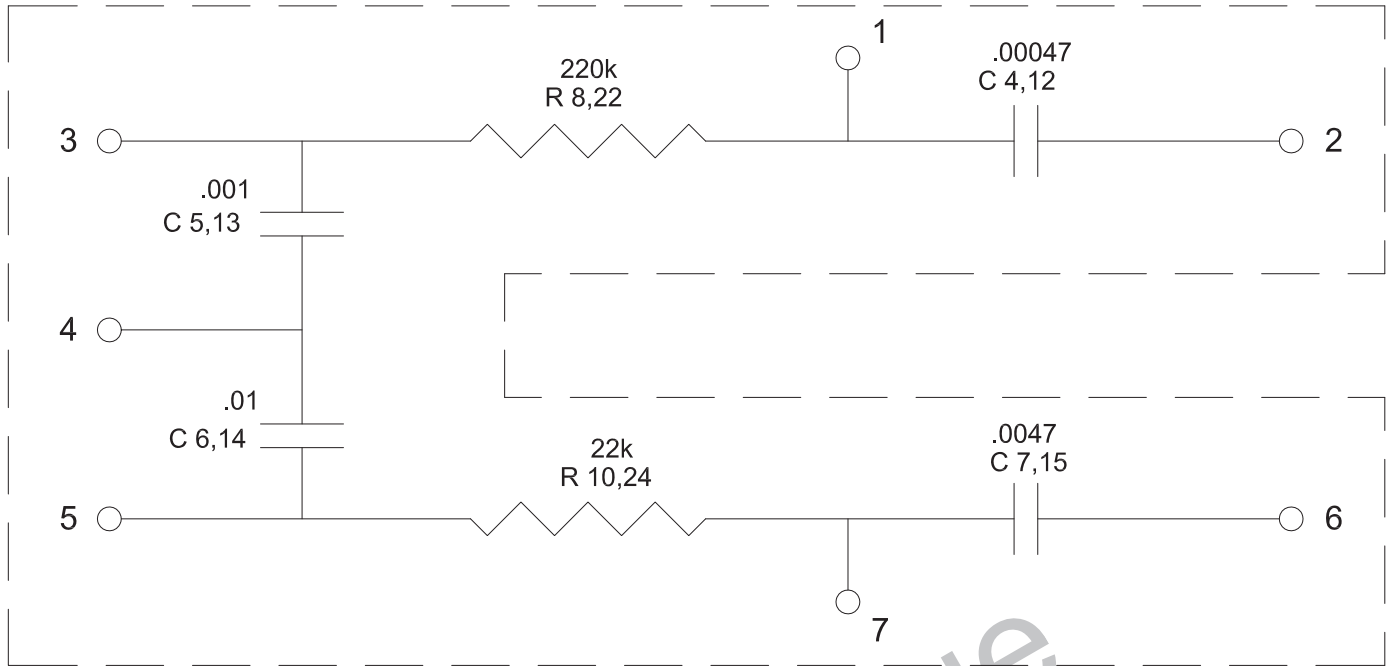
CAPACITORS

Item No.	Rating		Type
	Cap.	Volt	
C 1a	20	450	electrolytic
C 2a, b	40, 30	500	"
C 3a	40	500	"
C 1	.002	200	ceramic
C 2	.02	200	"
C 3	.02	400	paper
C 4,12	.00047		see PC
C 5,13	.001		see PC
C 6,14	.01		see PC
C 7,15	.0047		see PC
C 8	.02	400	paper
C 9	.02	200	ceramic
C 10	.002	200	"
C 11,20	.02	400	paper
[^] C 16	2	6	electrolytic
C 17	.02	400	paper
C 18	.00025	200	ceramic
C 19,21,22	.02	400	paper
C 23	.0005	200	ceramic
C 24,25	.05	400	paper
C 26	.15	400	"
C 27,28	.05	400	"
C 29	25	12	electrolytic
C 30,31	.02	400	paper
C 32	.0005	400	ceramic
C 33	25	12	electrolytic
C 34,35	.02	400	paper
C 36	50	50	electrolytic
C 37,38,46	25	25	"
C 39	2		paper
C 40,43,45	.005	400	"
C 41	50	25	electrolytic
C 42	20	450	"
C 44	.05	600	paper

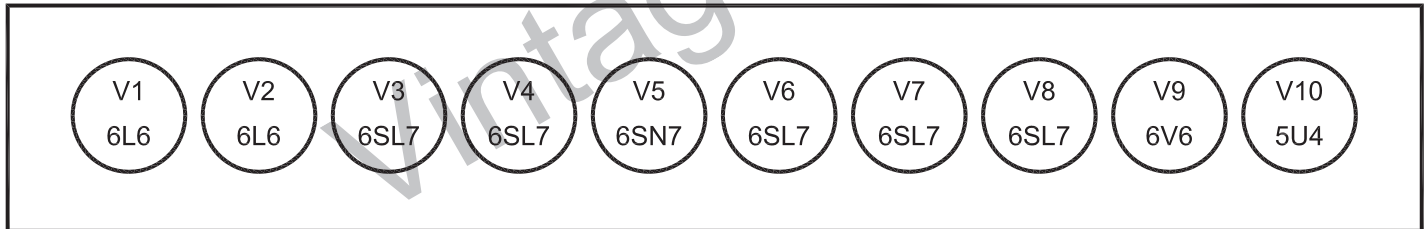
Capacity values given in rating column are in mfd

[^]C 16 value can be different

PRINTED CKT.



TUBE LOCATION



REVERBERATION UNIT

Item	Impedance		D.C. Res.	
	Input	Output	Input	Output
4 F	8 ohms	2250 ohms	1.4 ohms	180 ohms

SPEAKERS

Item	Rating			Part No.	Notes
	Size	Field	V.C. Imp.		
SP-1	12"	P.M.	8 ohms	C-12-N	
SP-2	2"x6"	P.M.	16 ohms	RP-103B	Tweeter
SP-3	4"	P.M	4 ohms	4CD3	Satellite
SP-4					spkrs

MISCELLANEOUS

Item No.	Notes
J 1	Input jack (open ckt) channel one
J 2	Input jack " "
J 3	Input jack " (double-stereo)
J 4	Input jack " (channel two)
J 5	Input jack " "
J 6	Input jack " ext. amplifier
J 7	Output jack (close ckt) ext. speaker
J 8	Phono jack (satellite speaker)
Sw.1	Ground switch spdt
Sw.2	Standby switch spst
Sw.3	On-off switch spst
Ft.Sw.4a,b	Foot switch for vibrato & echo spst (push-button)
Fuse	3 A 250v